

SECT1 Fixed Thermal Imaging Security Camera

Dual Spectrum 24x7 Surveillance IP Network Thermal Bullet Camera



SECT1 Dual spectrum is a high performance thermal imaging IP bullet camera, which is ideally designed for **Surveillance, Security, Warehousing & Perimeter Intrusion & Fire safety.**

SECT1 Thermal Imaging Camera's **strong characteristics** provides **accurate & reliable results** in both **Day & Night** conditions including adverse weather such as Snow, Fog, Rain.

System comprises both a 5MP visible camera & advanced infrared thermal imaging with resolution 256 x 192 & 12µm pixel pitch.

Multiple **SECT1** can be Linked up through an IP network with a commercial Network video recorder.

Key features include :

- **Smart Tripwire Intrusion system.**
- **Enhanced intrusion detection for detection of humans & Vehicles.**
- **For fire safety alarms can be configured for when exceeding temperature range.**

Smart Virtual Tripwire Intrusion System : An operator admin can set the lines, circle or polygon which serve the function of a smart virtual tripwire , **the video content** (VCA) is analysed by the **SECT1** Thermal camera which if intruded will be recognized as a **human or vehicle**, and sends an alarm via email. In addition, a hooter or flashing light can be attached as an external alarm.

Infrared + visible light monitoring

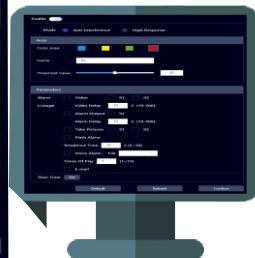
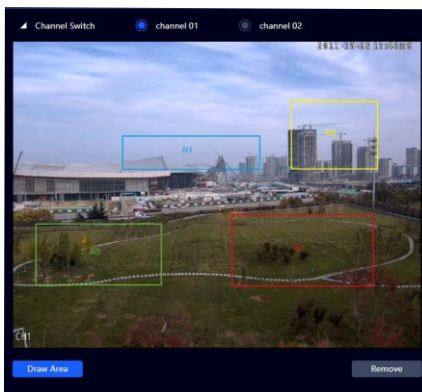
Intelligent analysis of intruders

Customised Voice alarms

Remote monitoring

256 x 192 Thermal resolution

2560x1920 Visible resolution



Dynamic Detection Interface : Upto **4 sections** can be set for **Fire detection** in an area, which can be **manually set** with **different temperature ranges.**

The area color, area name, threshold and **alarm** rules can be set **separately** for each area including timing for monitoring.

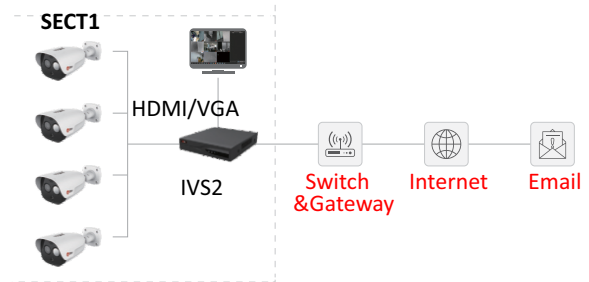
SECT1 Fixed Thermal Imaging Security Camera

Dual Spectrum 24x7 Surveillance IP Network Thermal Bullet Camera

Specifications :

Model	SECT1
Detector type	VOx, Uncooled FPA detector
Detector resolution	256*192
Spectral band	8~14μm
Pixel size	12μm
Thermal sensitivity (NETD)	40mk
FOV	Depending on lens configured
Frame rate	30Hz
Measurement range	-20°C~+550°C
Measurement accuracy	±2°C or ±2%
Color palettes	20
Perimeter intrusion	Yes, set line, polygon, circle
Image viewing modes	Thermal imaging, Visible image
Video format	H264, Mp4
External connectivity	External (NVR*)
Connectivity protocols	ONVIF, TCP
LAN protocols	TCP, HTTP, RTSP, SMTP, DHCP
Network interface	RJ45
Internal interface	1 x RJ45, 1 x DC, 1 x Alarm In, 1 x Alarm output, 1 x RS485
Online viewing	Web management interface
Alarm mode	I/O Alarms
Alarm output	email +physical alarm output to light / hooter
Power supply & consumption	DC12V±25% or POE
Operating temperature	-40° to +70°C
Ingress protection	IP66

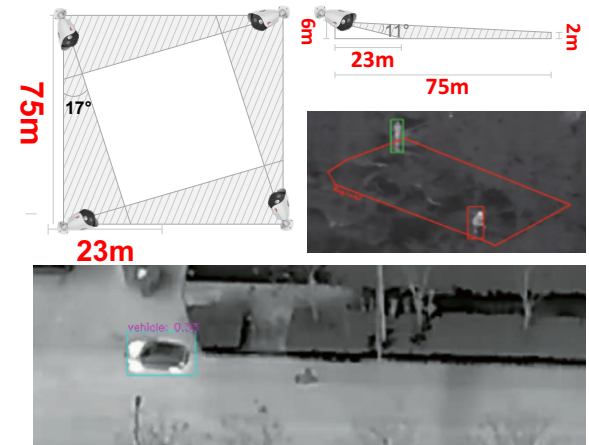
System Topology



Device	Qty	Remark
SECT1	1~4	Dual-spectrum
SECT1	1~4	Dual-spectrum
IVS2	1	8 channels
Monitor&HDMI Cable	1	
Network Cable	4	
Switch&Gateway	/	optional

Perimeter Protection

4 × SECT1 bullet camera (10mm lens) to protect an 75m×75m area, recognize the human & vehicle who is intruding.



Fire Detection

4 × SECT1 bullet cameras (7mm lens) are able to detect min. size 0.1m×0.1m fire object in 30m×13m area.

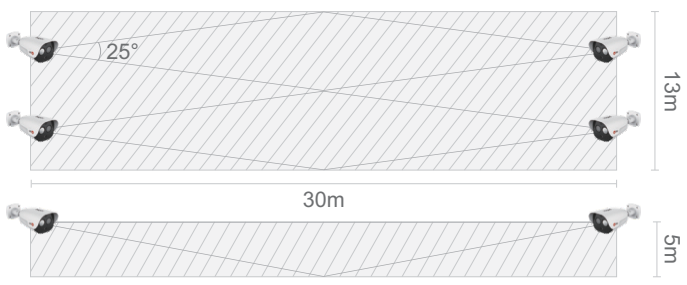


Image by SECT1, detected a fire point from 12m away (match stick, size 8mm×8mm)